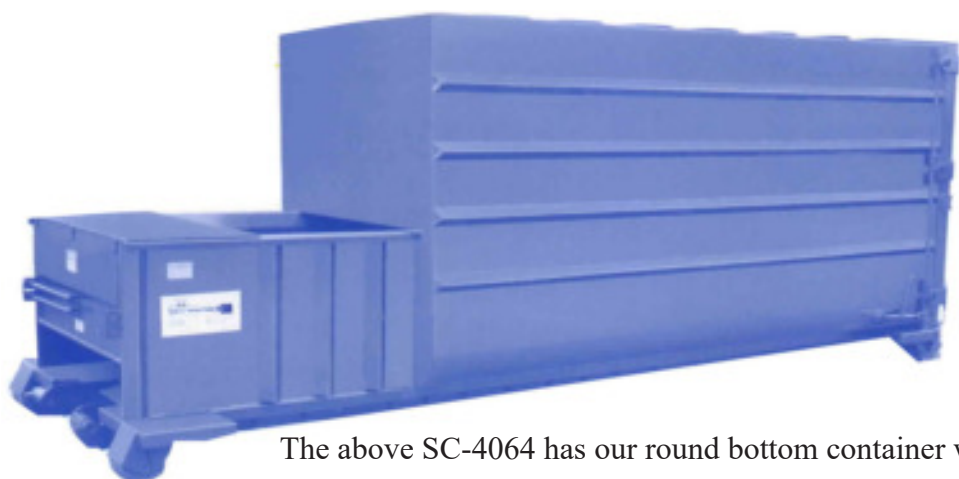


SEBRIGHT MODEL SC-4064

SELF CONTAINED COMPACTOR



The above SC-4064 has our round bottom container with standard understructure.



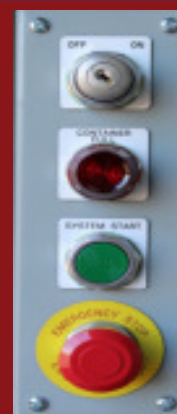
The 10 HP power unit is energy efficient featuring only brand name electrical and hydraulic components, along with a 12 gpm pump for high performance and a 36 gallon oil reservoir



The heavy-duty hinge is the strongest on the market place.



The ratchet latch tightens against the door seal and insures a tight seal.



The Operator station includes: safety key lock, pull to start, push to stop, full container light and can be mounted in any convenient location.

The Sebright Model SC-4064 is a compactor and container combined into a leak proof single efficient unit. Sebright's SC-4064 is the industries best and largest (40" x 64" charge opening) self contained. Because of the 25 tons of compaction force, full door seal, and large capacity container, it is ideal for restaurants, supermarkets, and hospitals or other applications requiring liquid retention.

The superior design and high quality workmanship of this unit along with its many standard features, make it your best value on the market today.

**Compactor/Leakproof
Container - in one unit!**

The Densification Specialists

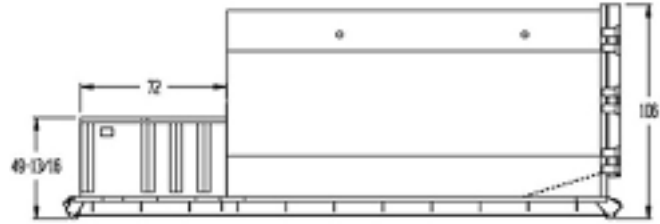
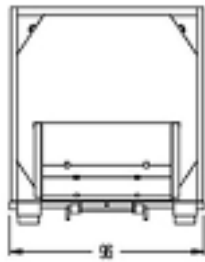
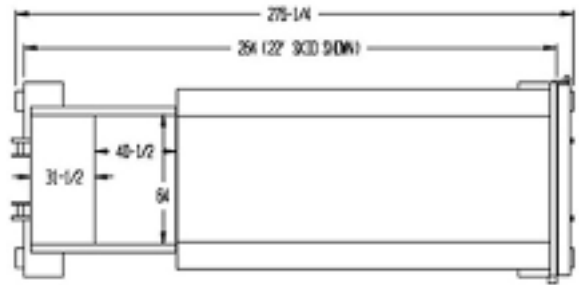
Call Toll Free
1-800-253-0532

Sebright Products, Inc.,
127 N. Water St.
Hopkins MI 49328





30 Gallon Hydraulic Power Unit



NOTE: ALL DIMENSIONS ARE IN INCHES

Model Number	Cu. Yd.	Motor HP	Pump GPM	No. of Cyls.	Cyl. Bore	Cyl. Stroke	Max PSI	Ram Face Sq. In.	Ram Face PSI	Cyl. Force	Cycle Time	Cu. Yd. Hour	Ind. Criteria Rating	Base Unit Weight (lbs.)
SC-4064	2.0	10	12	2	4.5	32	2,000	1,721	30	51,529	34	159	1.5	12,500

COMPACTOR & CONTAINER SPECIFICATIONS

Model Number	SC-4064-16	SC-4064-18	SC-4064-20	SC-4064-22	SC-4064-24
Total Nominal Cubic Yards	22	26	30	34	38
Compactor & Container - O.A. Length	17'6"	10'6"	21'6"	23'6"	25'6"
Container - O.A. Height	107"	107"	107"	107"	107"
Container - O.A. Width	96"	96"	96"	96"	96"
Compactor Loading Height	52"	52"	52"	52"	52"
Compactor Platform - O.A. Width	73"	73"	73"	73"	73"
Compactor & Container Weight	9,496 lbs.	10,172 lbs.	10,848 lbs.	11,524 lbs.	12,200 lbs.
Remote Power Unit W/Oil - Weight	500 lbs.	500 lbs.	500 lbs.	500 lbs.	500 lbs.

Compactor Container Structural Components

Compactor Floor (Reinforced AR-235).....	3/8"	Ram Top (Reinforced).....	3/8"
Compactor Side (Reinforced).....	7 ga	Container Floor.....	3/16"
Breaker Bar.....	8X8x1/2"	Container Sides & Roof (Reinforced).....	12 ga.
Ram Floor (Reinforced).....	1/2" AR	Octagon Container Sides & Roof.....	3/16"
Ram Face (Reinforced).....	1/2"	Container Door (Reinforced).....	10 ga.
Main Rail Tubes.....	6 " x 2" x1/4"		



Sebright Products, Inc
 Phone: 269-793-7183 ** Fax: 269-793-4022
 Toll Free: 800-253-0532
 www.sebrightproducts.com



Due to product improvement, the manufacturer, reserves the right to alter or amend, without notice, any of these specifications and/or dimensions.

All machines and accessories are primer coated and finish painted. Standard color chart is available upon request.

Complete Line of Solid & Wet Waste Handling Equipment includes:

Sebright Products, Copyright 10-2018

Stationary Compactors * Self Contained Compactors * Precrushers * Hydraulic Dumpers * Densifiers * Construction Compactors * High Density Extruders * Belt Filter Presses * Xtractors * Conveyors * X3Cyclers * Oil Filter Recycler