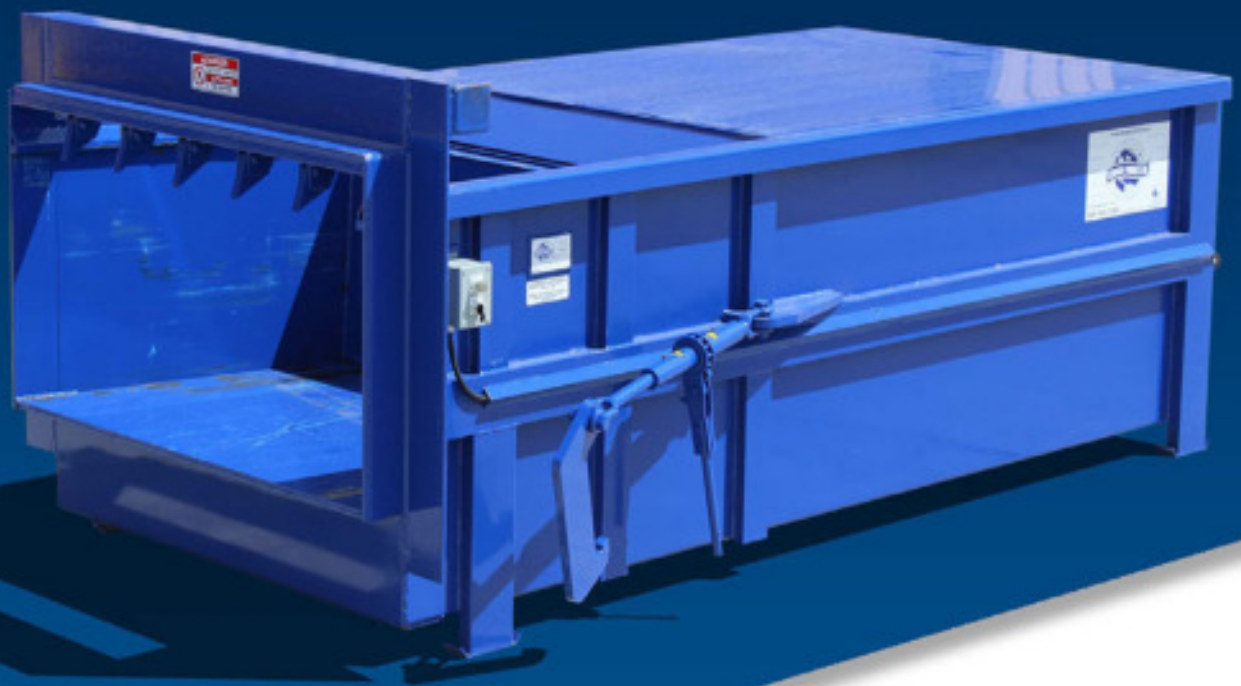


# STATIONARY COMPACTORS

**MODEL 4660, 4660-HD, & 4660-2**

These compactors were designed to provide higher payloads. In combining the large 46" x 60" opening, incline ram and the deep penetration, you have the industry's finest high density 2 yard machines.



127 N. Water St. Hopkins, MI 49328  
269-793-7183  
[www.sebrightproducts.com](http://www.sebrightproducts.com)



# STATIONARY COMPACTORS

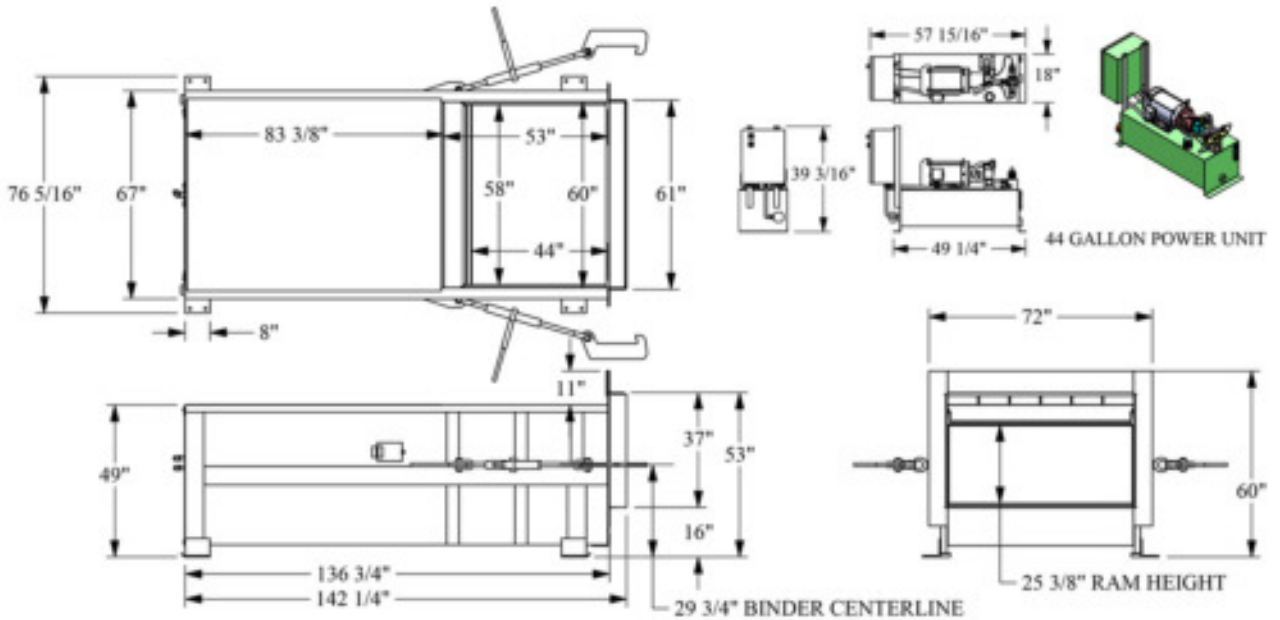
## Standard Features

- Abrasive resistant floor (AR 235)
- Large clear top opening 45 x 58"
- 4660-HD Large Cylinder (7" bore, 4 1/2 rod)
- 4660-2 Twin (6" bore, 4 1/2 rod)
- Deep container penetration, full 22"
- Long motor life (T.E.F.C.)
- Remote station (Operator station) with container full light
- Liquid filled pressure gauge
- Auto cycle / Multi Cycle
- Rental company proven
- 800 lb. capacity walk-on deck (tread plate)



\* All dimensional data for reference only

\* Due to product improvement, the manufacturer reserves the right to alter, or amend, without notice, any of these specifications and dimensions.



Model	Ca. Yd.	Motor Pump	Pump GPM	Cyls.	Cyl. Bore	Cyl. Stroke	Max PSI	Ram Face Sq.In.	Ram Face PSI	Cyl. Force	Cycle Time	Cu. Yd. Hour	Ind. Criteria Rating	Base Unit Weight (lbs)
<b>4660</b>	2.0	10	15.9	1	6	68	2,000	1,680	34	56,540	45.1	129	1.62	5,950
<b>4660-HD</b>	2.0	15	19	1	7	68	2,000	1,680	46	79,960	56.8	104	1.62	6,250
<b>4660-2</b>	2.0	15	19	2	6	68	2,000	1,680	67	113,100	75.6	79	1.62	6,450

While Sebright Products, Inc., strives to make the information provided on processing of your waste or recycling stream, as timely and accurate as possible, the company makes no claims, promises or guarantees about the accuracy, completeness, or adequacy of any of the provided information, and expressly disclaims liability of errors and omissions in the content of the information, or analysis provided to your company. It is solely the responsibility of each recipient of the information Sebright Products, Inc., has provided to satisfy itself as to the accuracy of the information provided by Sebright Products, Inc., and as to the efficacy of the product(s) for the use(s) intended.