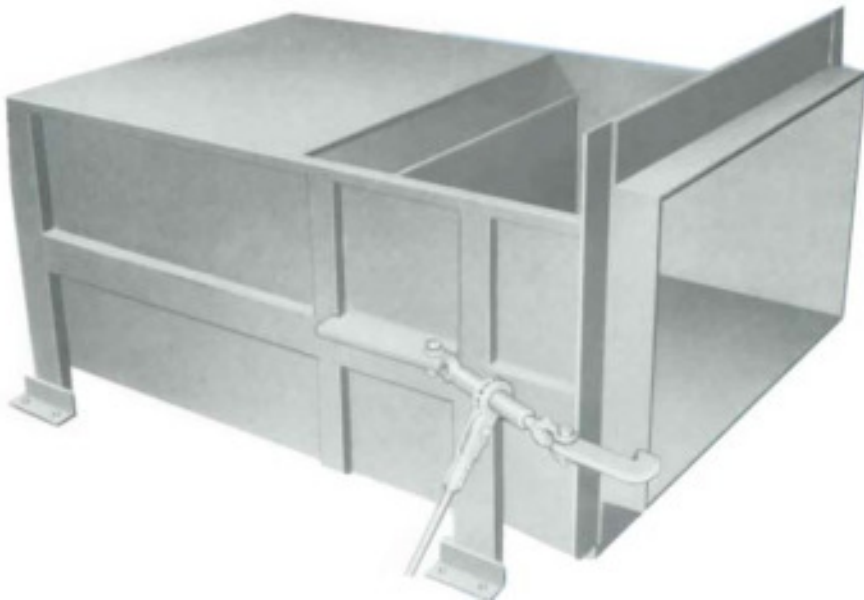


SEBRIGHT MODEL 4260

STATIONARY COMPACTOR

**2.0
CUBIC YARD
CAPACITY**



An economical 2 yard machine to fit into tight places (Overall length 8'-6")

Ideal machine for retail, commercial and light industrial applications.

Call Toll Free
1-800-253-0532

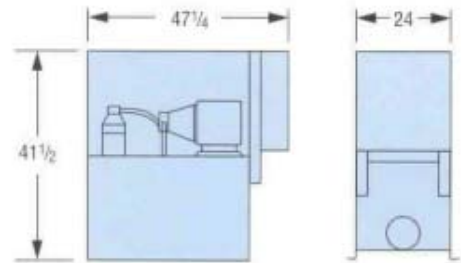
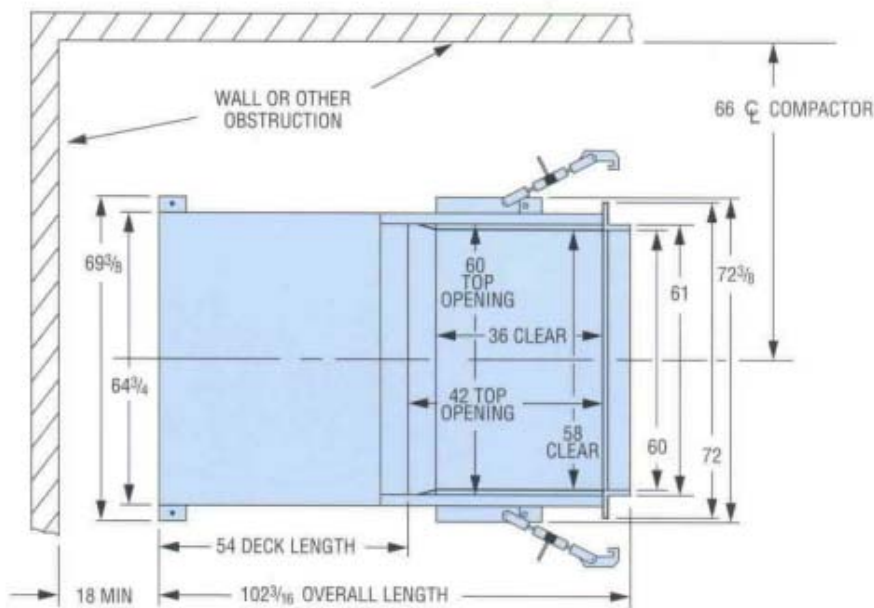
STANDARD FEATURES

- Abrasive resistant floor (AR 235)
- Large clear top opening 36" x 58"
- Large Cylinder (6" bores, 4 1/2 rod)
- 40 gallon hydraulic reservoir
- Long motor life (T.E.F.C)
- Remote station with container full light
- Liquid filled pressure gauge
- Ram Position Switch
- Deadman selector switch

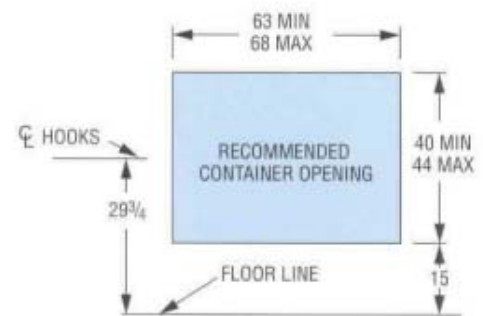
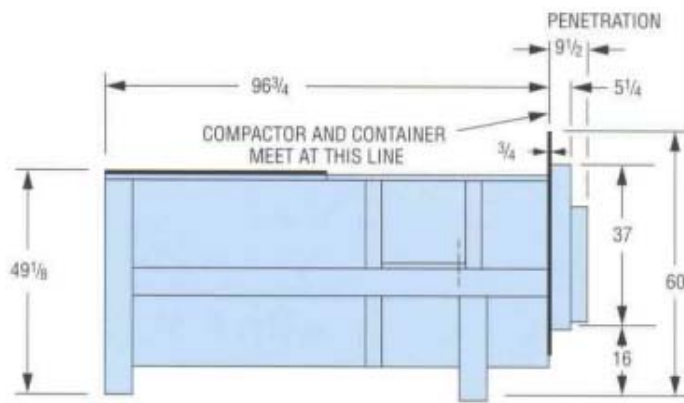
Sebright Products, Inc.
127 N. Water St.
Hopkins, MI 49328



THE DENSIFICATION SPECIALISTS



POWER UNIT



MODEL NUMBER	CUBIC YARD	MOTOR H.P.	PUMP GPM	NO. OF CYLS.	CYL. BORE	CYL. STROKE	MAX. PSI	RAM FACE SQ. IN.	RAM FACE PSI	CYL. FORCE	CYCLE TIME	CU. YD. HOUR	IND. CRITERIA RATING	BASE UNIT WEIGHT (LBS)
4260	2	10	12	1	6	46"	1,800	1,560	34.6	50,900	41 sec	123	1.22	4,300



POWER UNIT

The 10 HP power unit is energy efficient with only the best components available in it



CONTROL

The operator station includes: pull to start, push to stop, full container light; and can be mounted in any convenient location



Model 4260 with dog house hopper and power unit cover

Sebright Products, Inc.
 127 N. Water St., Hopkins, MI 49328
 269-793-7183 -- Fax 269-793-4022
 800-253-0532
 www.sebrightproducts.com

Due to product improvements, the manufacturer reserves the right to alter or amend, without notice, any of these specifications and/or dimensions.

All machines and accessories are primer coated. Standard color chart available upon request.

Complete Line of Dry & Wet Waste Equipment Including:

*Stationary Compactors * Self-Contained Compactors * Pre-Crushers * Hydraulic Dumpers * Densifiers * Construction Compactors * High Density Extruders * Belt Filter Presses*

